

# SMEs AT A GLANCE

AUGUST 2013

Small business is big in Canada: 98.1% of businesses have fewer than 100 employees and contribute slightly more than 30% to Canada's GDP.

## SME DISTRIBUTION

| Size of Firm               | # of Firms       | % of Firms    |
|----------------------------|------------------|---------------|
| Micro (1-4 employees)      | 615,599          | 54.9%         |
| Small (5-99 employees)     | 485,180          | 43.2%         |
| Medium (100-499 employees) | 18,999           | 1.7%          |
| Large (500+ employees)     | 2,528            | 0.2%          |
| <b>TOTAL</b>               | <b>1,122,306</b> | <b>100.0%</b> |

*Statistics Canada, Business Register, December 2011. Excludes enterprises without employees.*

| SME Distribution by Region | % SME | % Population |
|----------------------------|-------|--------------|
| Newfoundland & Labrador    | 1.5%  | 1.5%         |
| Nova Scotia                | 2.7%  | 2.8%         |
| Prince Edward Island       | 0.5%  | 0.4%         |
| New Brunswick              | 2.3%  | 2.2%         |
| Quebec                     | 21.8% | 23.6%        |
| Ontario                    | 35.0% | 38.4%        |
| Manitoba                   | 3.3%  | 3.6%         |
| Saskatchewan               | 3.5%  | 3.1%         |
| Alberta                    | 13.6% | 10.9%        |
| British Columbia           | 15.5% | 13.1%        |
| Nunavut / NWT / Yukon      | 0.3%  | 0.3%         |

*Statistics Canada, Business Register, December 2011 and Census 2011.*

| SME Distribution by Industry                    | #                | %             |
|---|------------------|---------------|
| Retail trade                                    | 146,056          | 13.1%         |
| Other services                                  | 125,200          | 11.3%         |
| Construction                                    | 125,725          | 11.3%         |
| Professional, scientific and technical services | 124,616          | 11.2%         |
| Health care and social assistance               | 96,655           | 8.7%          |
| Accommodation and food services                 | 74,130           | 6.7%          |
| Wholesale trade                                 | 61,471           | 5.5%          |
| Manufacturing                                   | 51,507           | 4.6%          |
| Transportation and warehousing                  | 51,147           | 4.6%          |
| Administrative and waste management             | 51,733           | 4.7%          |
| Agriculture, forestry, fishing and hunting      | 50,872           | 4.6%          |
| Real estate and rental and leasing              | 44,659           | 4.0%          |
| Finance and insurance                           | 41,981           | 3.8%          |
| Arts and entertainment                          | 16,977           | 1.5%          |
| Management of companies and enterprises         | 13,800           | 1.2%          |
| Information and cultural industries             | 13,883           | 1.3%          |
| Educational services                            | 11,856           | 1.1%          |
| Mining and oil and gas extraction               | 9,147            | 0.8%          |
| <b>TOTAL</b>                                    | <b>1,113,052</b> | <b>100.0%</b> |

*Statistics Canada, Business Register, December 2011.*

# EXPORTS

In a global economy, exports add significantly to economic growth. 86% of exporting companies are small (<100 employees), but produce only 25% of the total value of Canadian exports; the majority of exports (57%) are provided by large firms.

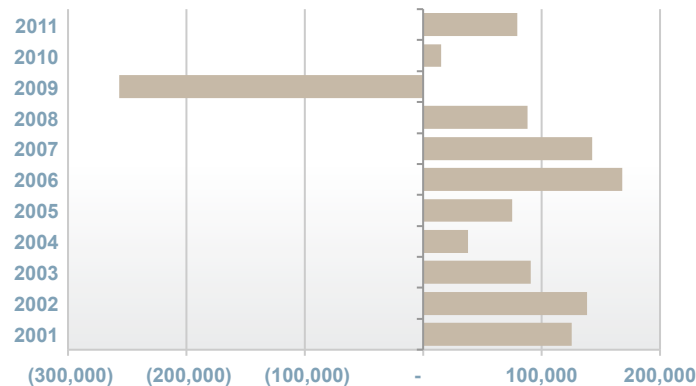
| Exporters by Size of Firm        | # of Firms    | % of Firms    |
|----------------------------------|---------------|---------------|
| Small (fewer than 100 employees) | 31,155        | 86.1%         |
| Medium (100-499 employees)       | 3,836         | 10.6%         |
| Large (500+ employees)           | 1,194         | 3.3%          |
| <b>TOTAL</b>                     | <b>36,185</b> | <b>100.0%</b> |

Statistics Canada, Exporter Register, 2010.

# SME JOB CREATION

SMEs employed 63.7% of private sector employees in 2011, or 6.8 million people across the country. In 2011, SMEs created about 79 000 jobs. Over the 2001 to 2011 period SMEs were responsible for 53.9% of all jobs created on average in the private sector.

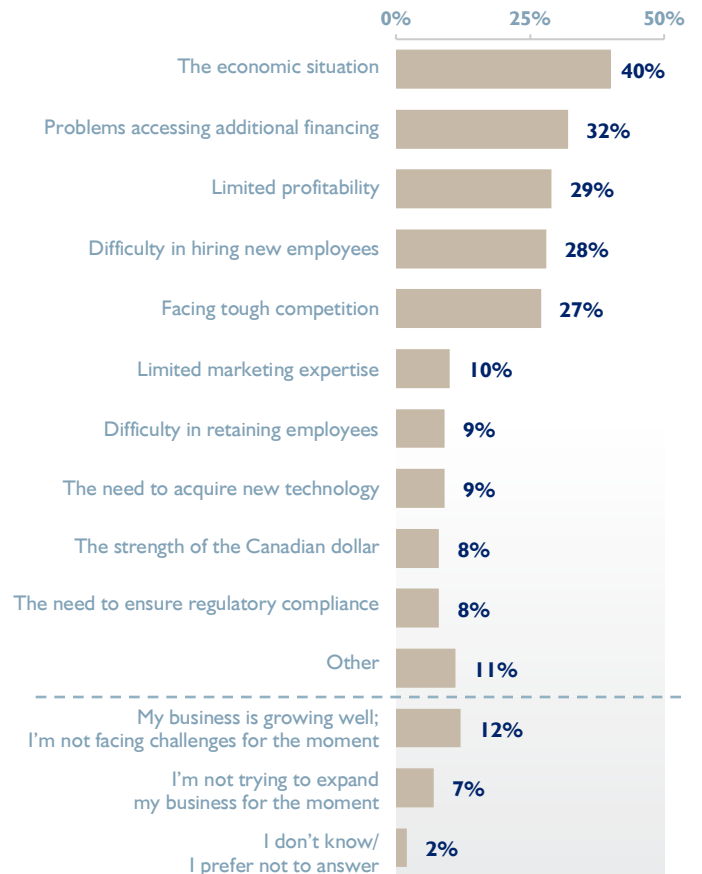
## Relative contributions to the net change in private sector paid employment by SMEs



Statistics Canada, Survey on Employment, Payrolls and Hours, April 2012.

# BUSINESS CHALLENGES

SMEs report several key business challenges that prevent them from expanding their company.



BDC ViewPoints study, October 2011.